

Nicheliving®

EAST CANNINGTON





COMPANY VISION

Since 2002, Nicheliving have been helping West Australians achieve the Australian Dream. We've had one simple vision: to create the most affordable developments in established suburbs where land is limited.



Whether you're looking for your first home, a forever home or even an investment, East Cannington has something for everyone, with a modern variety of home and apartment designs on offer for highly affordable prices.

Ronnie Michel-Elhaj
Managing Director, Nicheliving



Artist impression for illustrative purposes only.

WHY YOU'RE BETTER OFF WITH NICHELIVING



All Under One Roof

We develop the land AND build your home – all under one roof. PLUS, we also offer finance, real estate and property management services. We're a one stop shop for achieving your property and financial goals!

Unbeatable Value

We'll make sure you get an amazing deal, but we'll also look after you in the long term. Our homes are designed for ongoing affordability, with low maintenance and environmentally friendly features to help keep your household costs down.

We Won't Be Beaten

We have built a reputation as Perth's largest affordable new home and land developer. You won't find a better deal than Nicheliving in any of our locations.

We're Unique

We're not like any other property group in Perth. With Nicheliving, you get to cut out the middle man, so you can deal direct with the developer and save.

Close to Everything

We look for up and coming hotspots in Perth's established suburbs, and only develop in areas where people want to live. In a Nicheliving home, everything you could ever need is already close by. All you have to do is move in and start living!

Strong Investment

The Nicheliving formula is the key to our success: affordability + infill locations = consistent demand for our homes. We follow a strict selection criteria to ensure your property will stand the best chance for capital growth.



East Cannington Park



Mills Park



Carousel Shopping Centre

**Quality, affordable homes.
Great locations.
Unbeatable value.
It's a winning formula.**



Curtin University



Cannington Train Station



WHY EAST CANNINGTON

Just south east of our vibrant CBD, Nicheliving East Cannington is a thriving area filled with a diverse range of young singles, growing families and mature couples. It offers an exciting variety of things to see and do, and is filled with opportunities for all ages.

Easy travel

Nicheliving East Cannington is only 10km from the CBD, and 5km from Perth's domestic and international airports. It's also within 1km of the Cannington train station, with regular trains and buses available to take you wherever you need to go.

Are you not entertained?

With the new \$350 million redevelopment opened, Westfield Carousel is Perth's largest shopping centre in the state! With a huge variety of places to shop and dine, as well as a cinema, it has everything you need!

Best in class

Right across the road from Gibbs Street Primary School, Nicheliving East Cannington is surrounded by excellent education options. There are several private and public schools in the area, with Curtin University just down the road, and Murdoch University only a short drive away.

Growth and opportunities

The City of Canning contributes \$9.83 billion to Gross State Product, making it the third most productive local government of the greater Perth area. Nicheliving East Cannington is also located only 2km from the Welshpool Industrial area, which is fantastic for those who are seeking new job opportunities!

The great outdoors

Nicheliving East Cannington is a short distance from many parks, including Cannington River National Park, with plenty of places nearby for a family picnic or even a kayak down the river on the weekend.

Get active

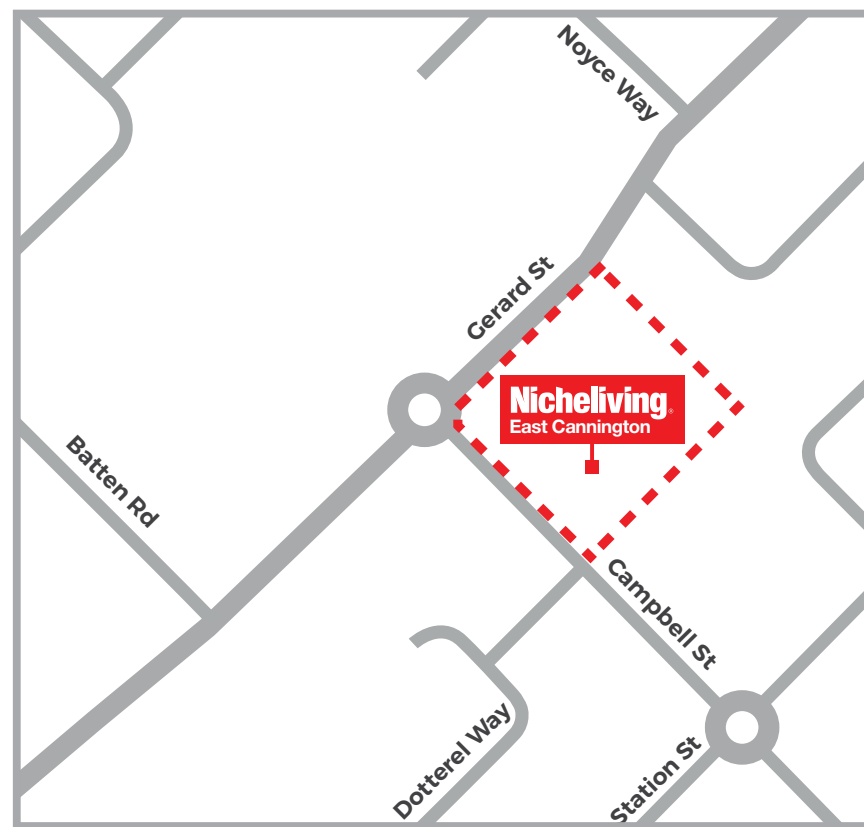
Cannington Leisureplex has everything you need to stay active and get involved in the community. The City of Canning also offers over 90 sports clubs, with something for all ages and interests!







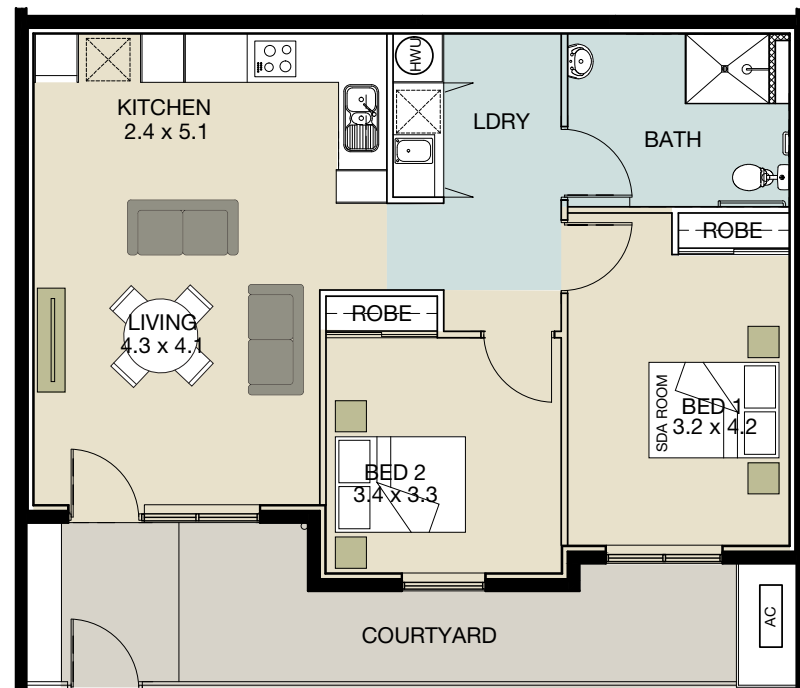
Find your perfect home at Nicheliving East Cannington.



APARTMENTS/COMMERCIAL SPACE



SOLD



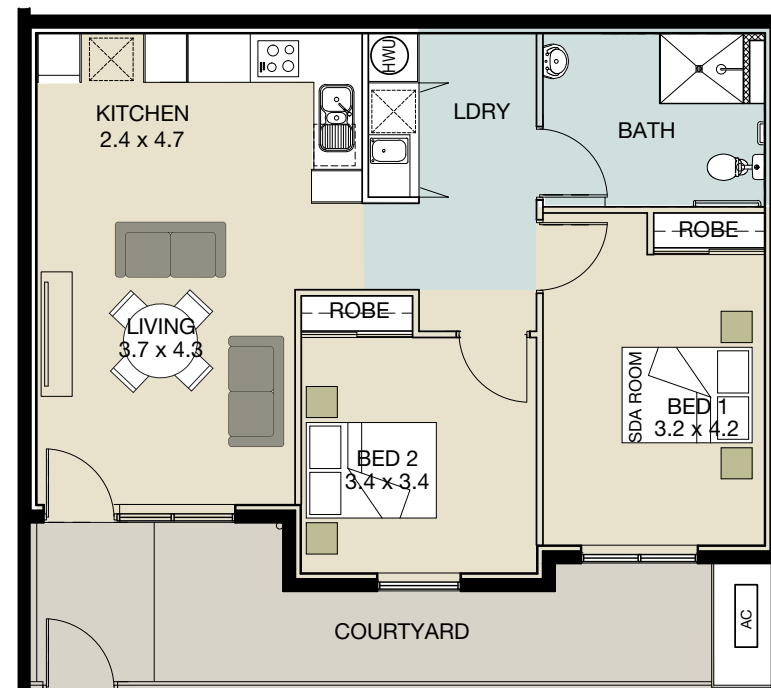
TYPE G1
 🛏️ 2 🚿 1 🏠 1

DIMENSIONS

FLOOR	81.04m ²
BALCONY	19.47m ²
TOTAL 100.51m²	

TYPE G1: UNIT 1, 2

SOLD

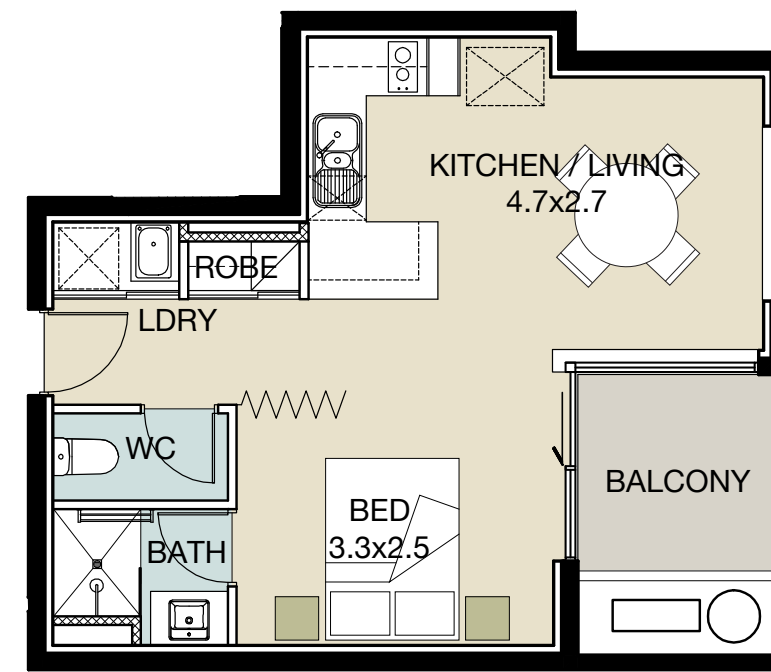


TYPE G2
 🛏️ 2 🚿 1 🏠 1

DIMENSIONS

FLOOR	77.32m ²
BALCONY	18.54m ²
TOTAL 95.86m²	

TYPE G2: UNIT 3

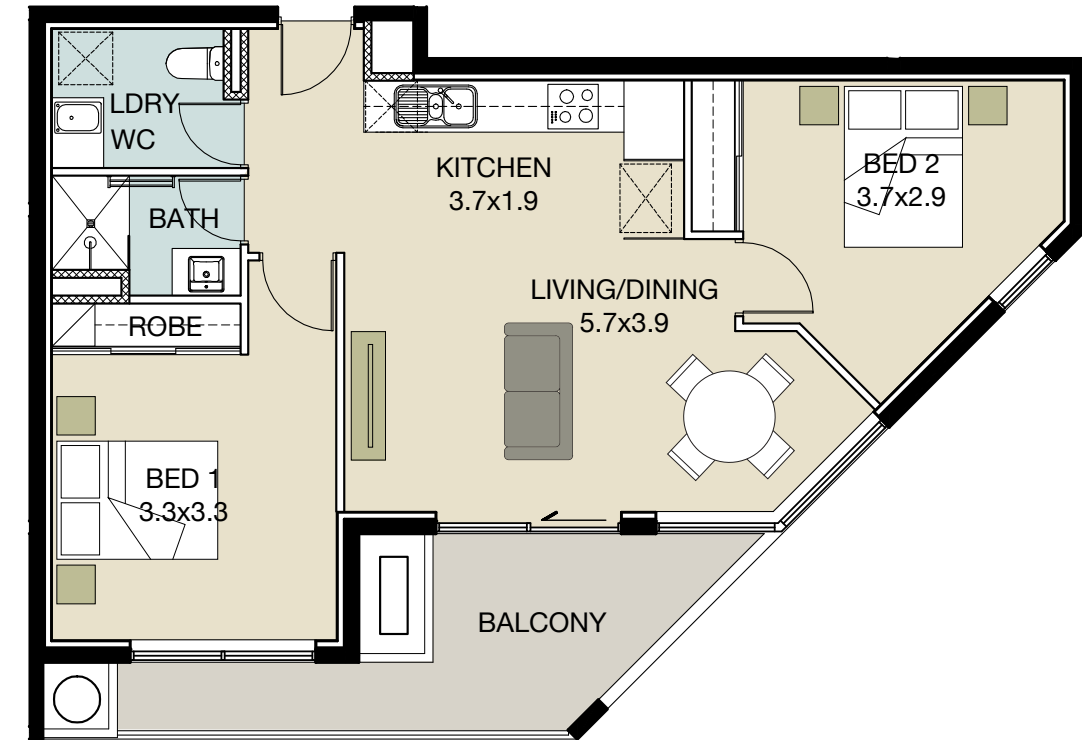


TYPE 1
 🛏️ 1 🚿 1 🏠 1

DIMENSIONS

FLOOR	33.40m ²
BALCONY	4.00m ²
TOTAL 37.40m²	

TYPE 1: UNIT 8 & 1



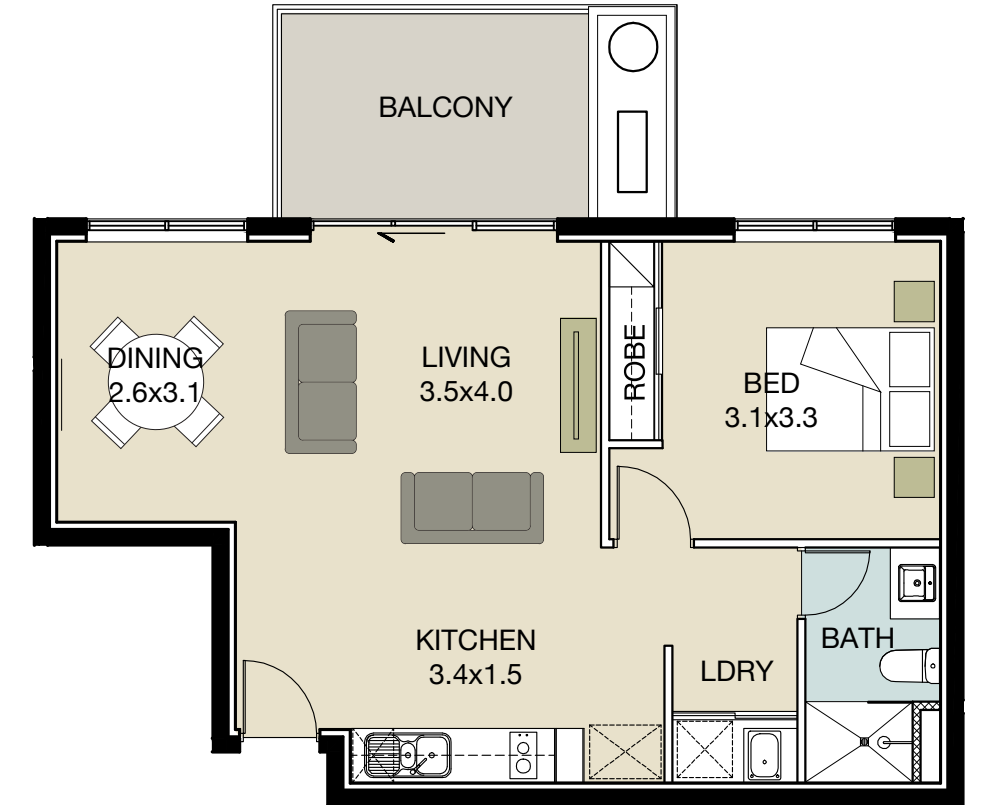
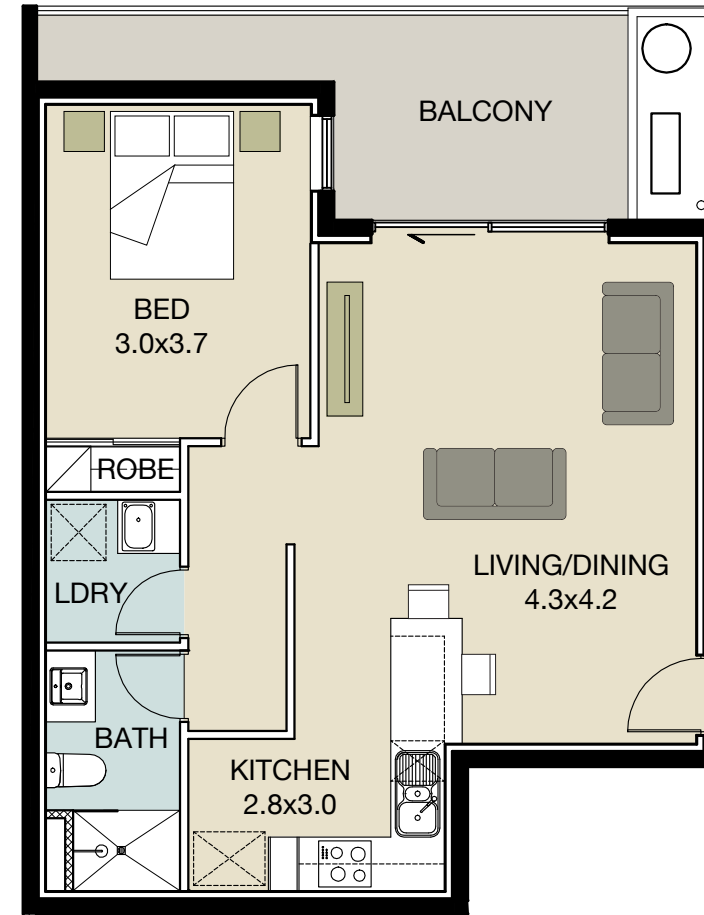
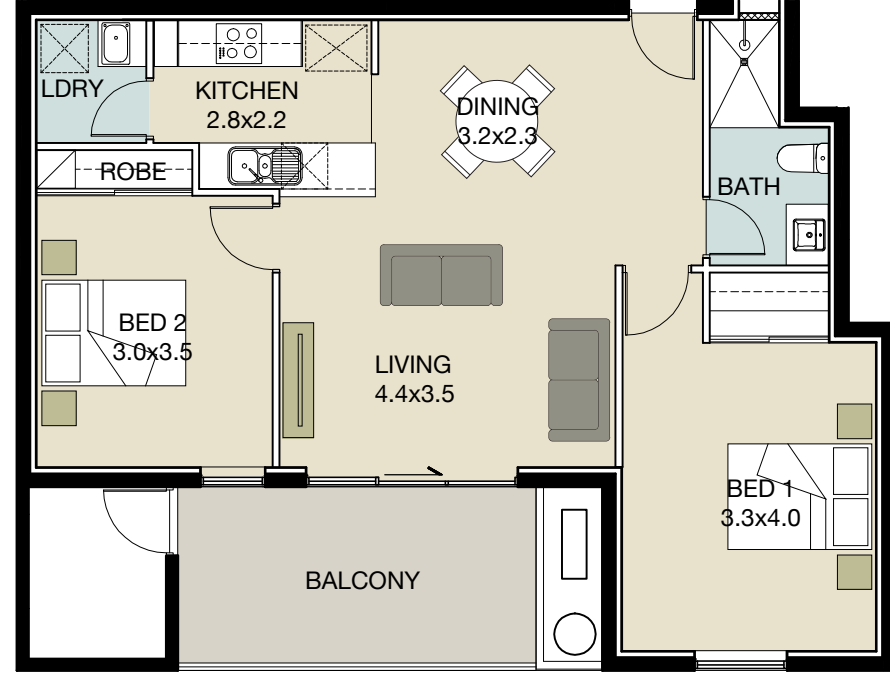
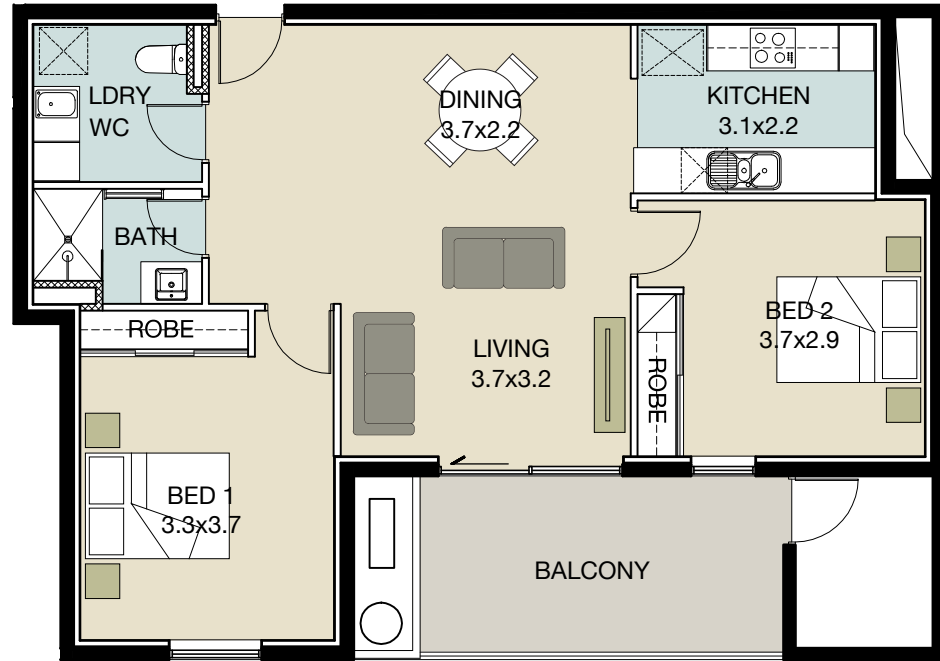
TYPE 2
 🛏️ 2 🚿 1.5 🏠 1

DIMENSIONS

FLOOR	60.83m ²
BALCONY	10.10m ²
TOTAL 70.93m²	

TYPE 2: UNIT 9 & 2

SOLD



TYPE 3

🛏️ 2 🚿 1.5 🏠 1

DIMENSIONS

FLOOR	70.75 ^{m2}
BALCONY	11.39 ^{m2}

TOTAL 82.14^{m2}

TYPE 3: UNIT 3

TYPE 4

🛏️ 2 🚿 1 🏠 1

DIMENSIONS

FLOOR	68.30 ^{m2}
BALCONY	11.23 ^{m2}

TOTAL 79.53^{m2}

TYPE 4: UNIT 4

TYPE 5

🛏️ 1 🚿 1 🏠 1

DIMENSIONS

FLOOR	52.71 ^{m2}
BALCONY	10.75 ^{m2}

TOTAL 63.46^{m2}

TYPE 5: UNIT 5

TYPE 6

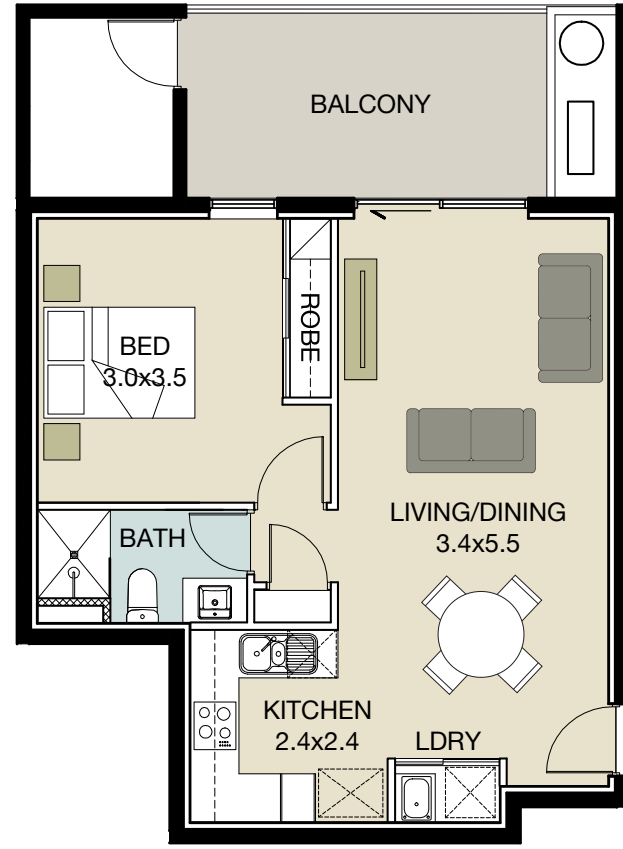
🛏️ 1 🚿 1 🏠 1

DIMENSIONS

FLOOR	53.17 ^{m2}
BALCONY	8.50 ^{m2}

TOTAL 61.67^{m2}

TYPE 6: UNIT 6



TYPE 7

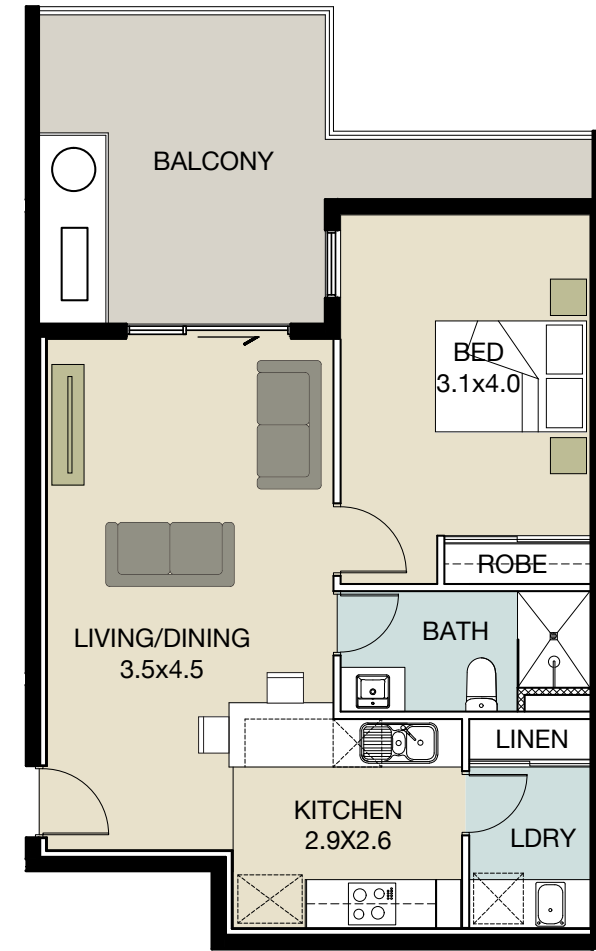
🛏️ 1 🚿 1 🏠 1

DIMENSIONS

FLOOR	47.85m ²
BALCONY	10.70m ²

TOTAL 58.55m²

TYPE 7: UNIT 7, 10



TYPE 8

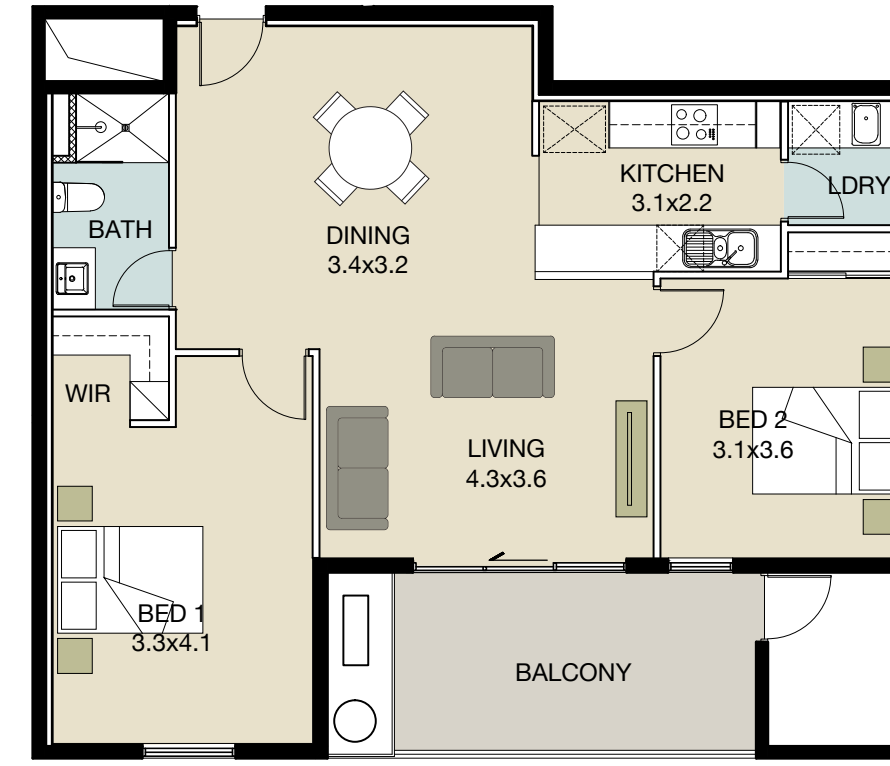
🛏️ 1 🚿 1 🏠 1

DIMENSIONS

FLOOR	51.97m ²
BALCONY	15.00m ²

TOTAL 66.97m²

TYPE 8: UNIT 4, 9



TYPE 9

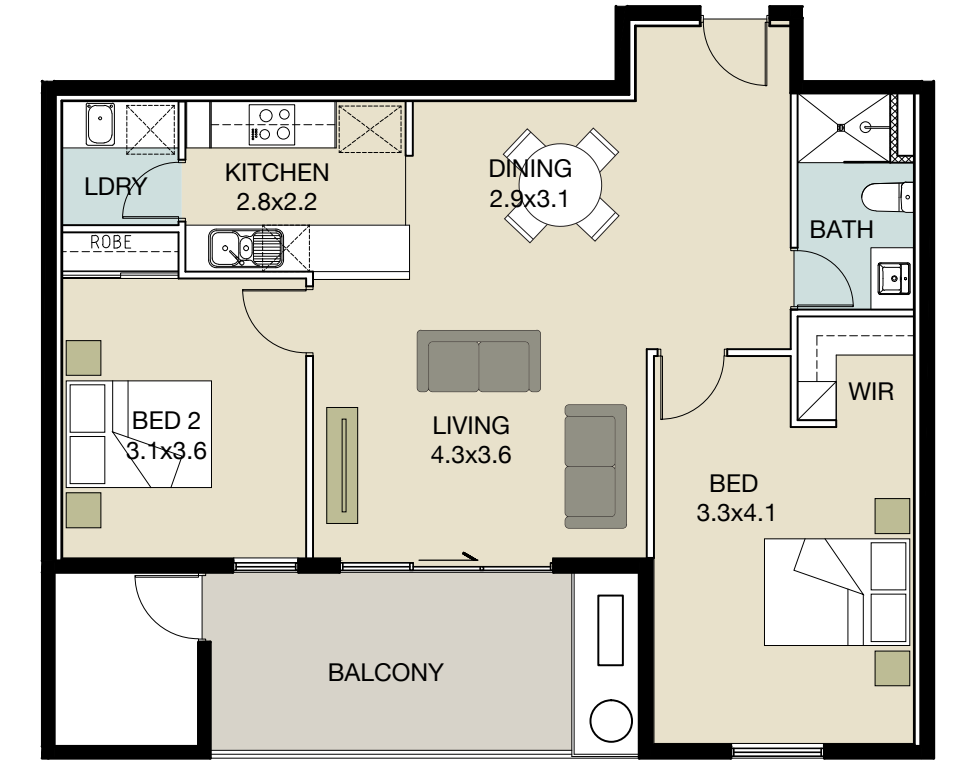
🛏️ 2 🚿 1 🏠 1

DIMENSIONS

FLOOR	77.66m ²
BALCONY	11.20m ²

TOTAL 88.86m²

TYPE 9: UNIT 5, 10



TYPE 10

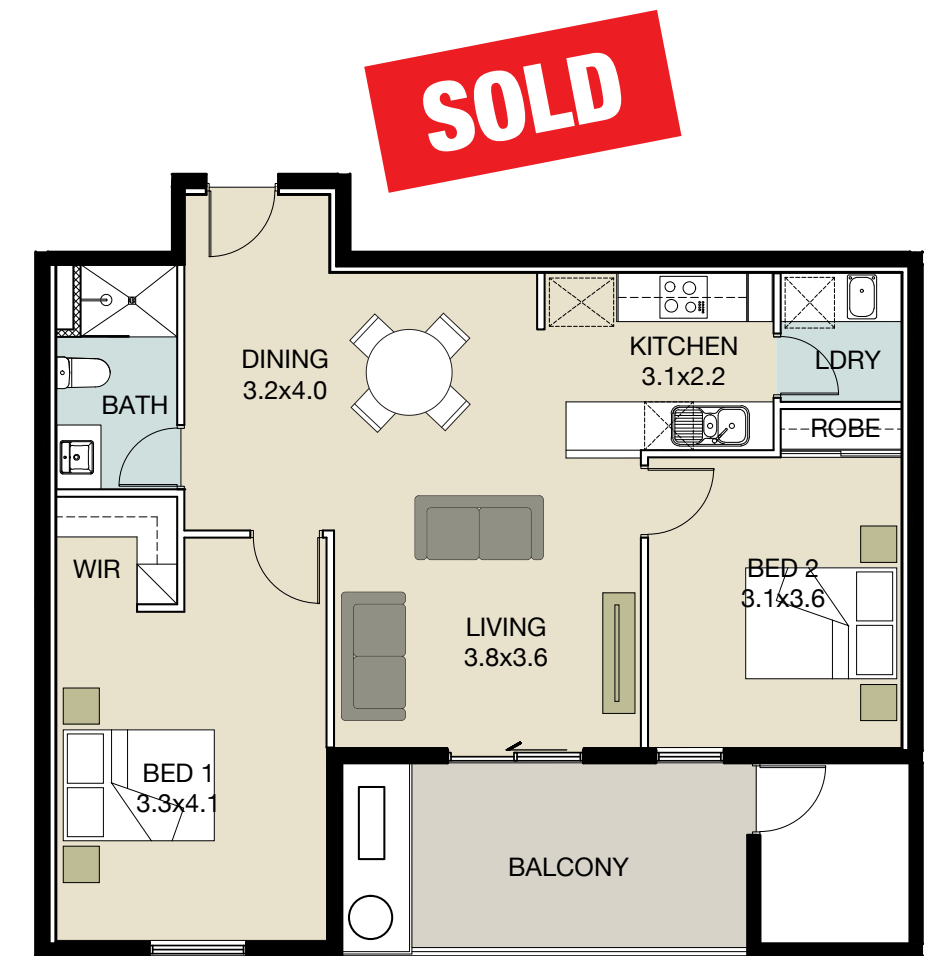
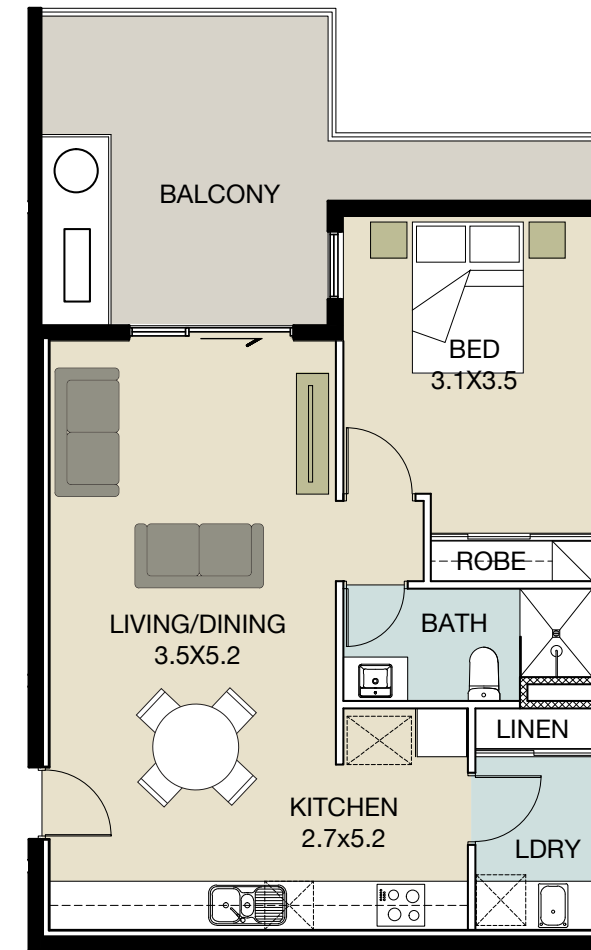
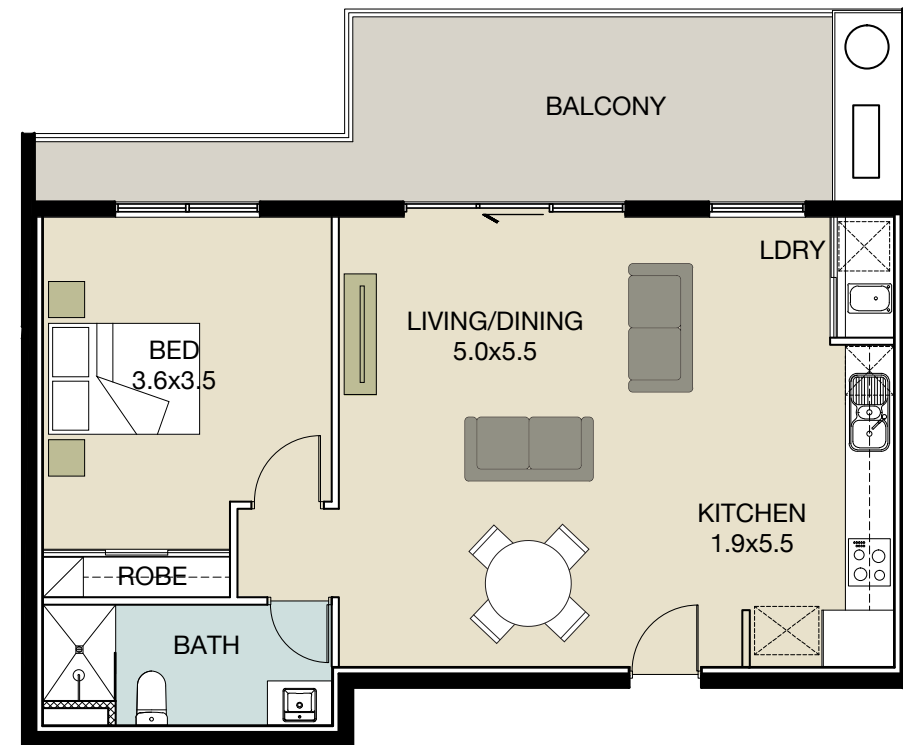
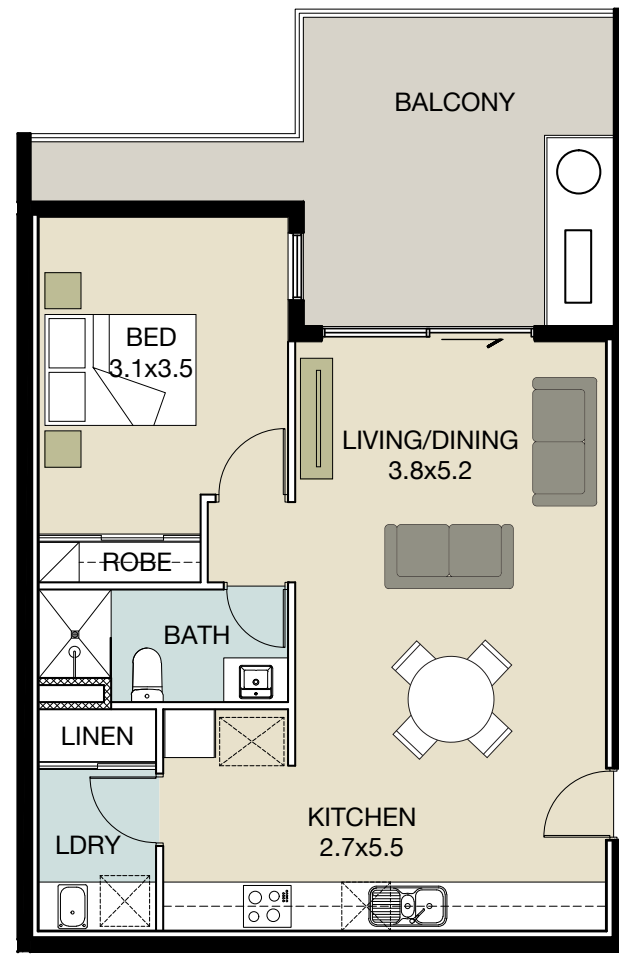
🛏️ 2 🚿 1 🏠 1

DIMENSIONS

FLOOR	75.13m ²
BALCONY	11.20m ²

TOTAL 86.33m²

TYPE 10: UNIT 6, 11



TYPE 11

🛏 1 🚿 1 🏠 1

DIMENSIONS

FLOOR	56.41m ²
BALCONY	16.20m ²

TOTAL 72.61m²

TYPE 11: UNIT 7, 12

TYPE 12

🛏 1 🚿 1 🏠 1

DIMENSIONS

FLOOR	61.78m ²
BALCONY	17.80m ²

TOTAL 79.58m²

TYPE 12: UNIT 8,13

TYPE 13

🛏 1 🚿 1 🏠 1

DIMENSIONS

FLOOR	54.21m ²
BALCONY	15.10m ²

TOTAL 69.31m²

TYPE 13: UNIT 14

TYPE 14

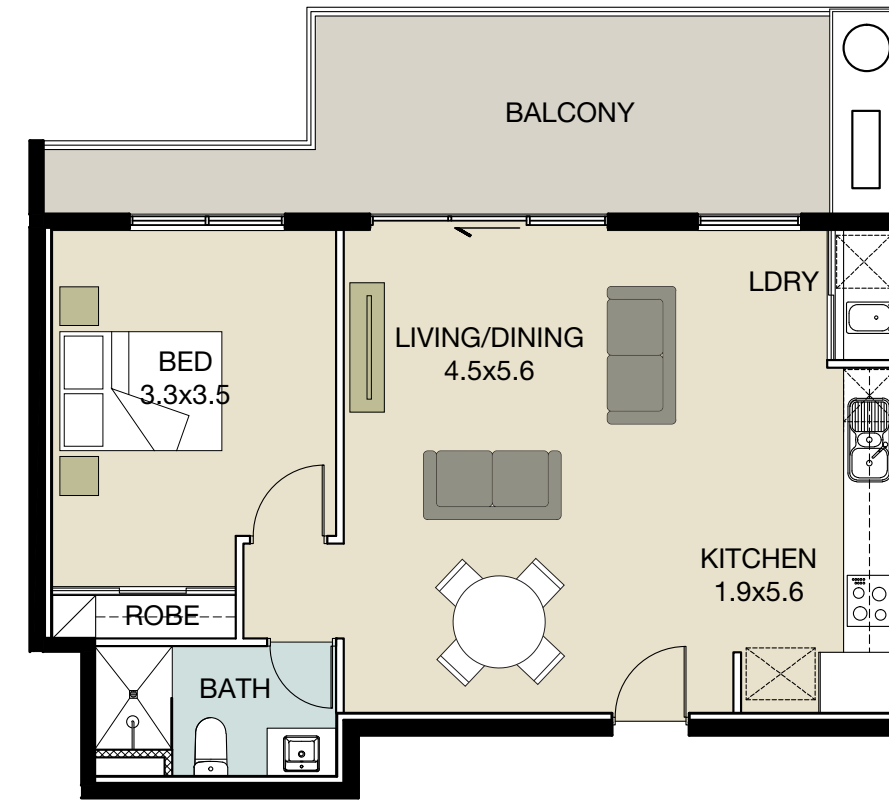
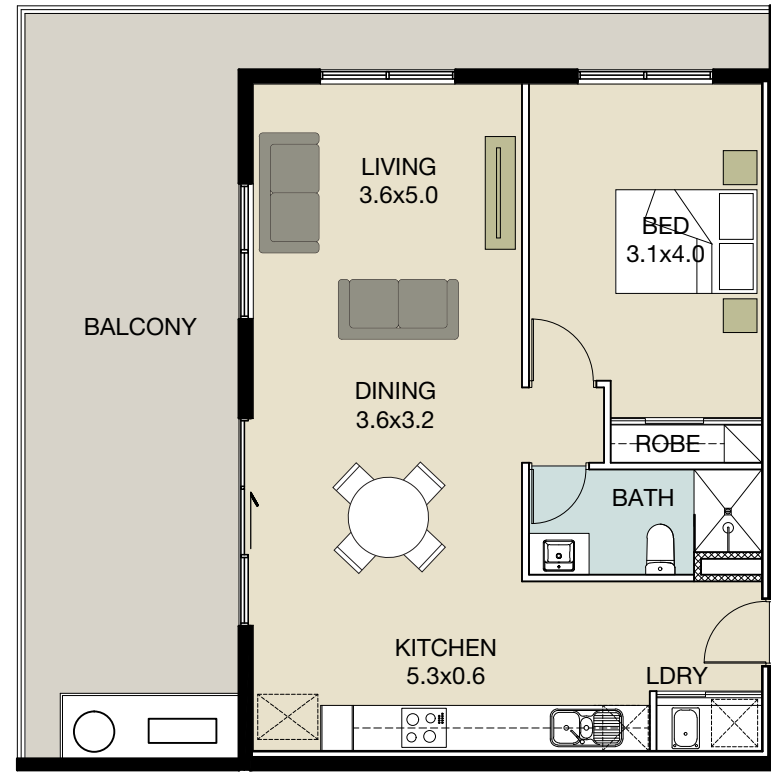
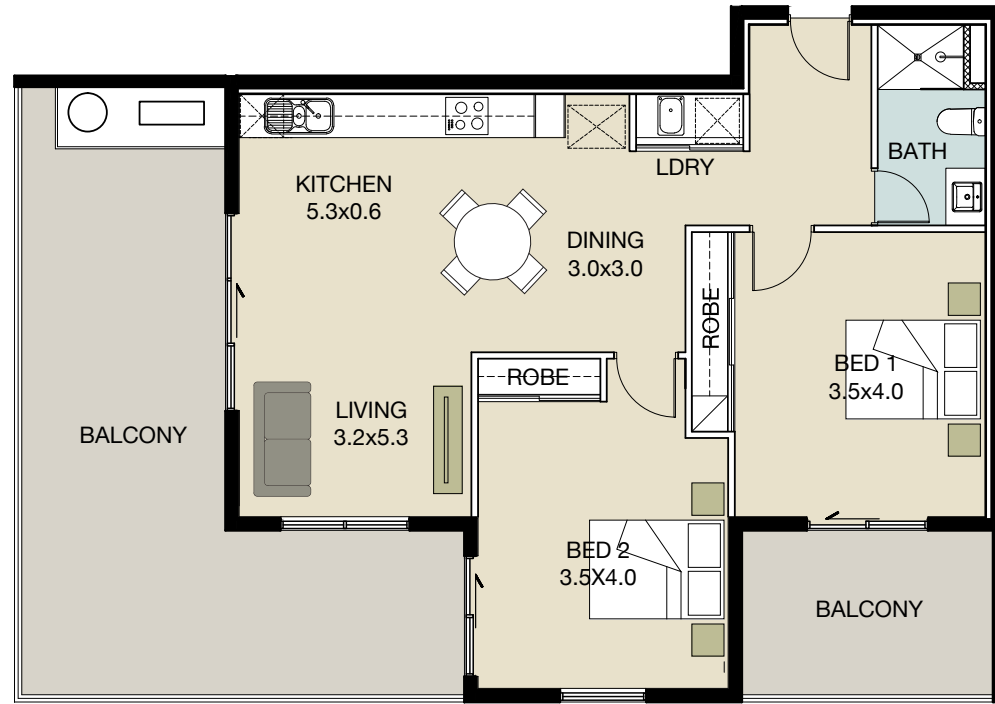
🛏 2 🚿 1 🏠 1

DIMENSIONS

FLOOR	71.99m ²
BALCONY	10.10m ²

TOTAL 82.09m²

TYPE 14: UNIT 15



TYPE 15

🛏️ 2 🚿 1 🏠 1

DIMENSIONS

FLOOR	73.12m ²
BALCONY	39.70m ²

TOTAL 112.82m²

TYPE 15: UNIT 16

TYPE 16

🛏️ 1 🚿 1 🏠 1

DIMENSIONS

FLOOR	60.04m ²
BALCONY	33.40m ²

TOTAL 93.44m²

TYPE 16: UNIT 17

TYPE 17

🛏️ 1 🚿 1 🏠 1

DIMENSIONS

FLOOR	56.35m ²
BALCONY	17.10m ²

TOTAL 73.45m²

TYPE 17: UNIT 18



Nicheliving®

180 Newcastle Street PERTH WA 6000
PO Box 51 NORTHBRIDGE WA 6865
P +61 8 9483 0000 E enquiries@nicheliving.com.au

developments | real estate | property management | home loans | capital | construction | technology

This brochure has been prepared by Nicheliving and its related companies including Australian Property Alliance Pty Ltd (ACN 102 889 896) trading as Nicheliving Real Estate and Projex Management and Construction Pty Ltd (ACN 114 605 408) trading as Nicheliving Construction (together "Nicheliving"). While Nicheliving has endeavoured to ensure that all information in this brochure is complete, accurate and up to date, the content is provided "as is" and "as available" and Nicheliving takes no responsibility for any error or omission relating to this information. Your use of this brochure including all content is at your own risk. Before taking or refraining from any action in reliance on the content you must make and rely on your own enquiries in relation to, and in the evaluation of, the content. All pricing and availability are subject to change without notice. Images and plans are, where applicable, lifestyle, location shots, internal and external housing images or artist's impressions and may be indicative only. Changes may be made during the development and dimensions, specifications and fittings may be changed at any time without notice. Nicheliving disclaims all liability and responsibility to the extent permitted by law for any loss, damage or claim of whatever nature suffered, sustained or incurred by you and any other person, corporation or other legal entity which arises out of an alleged reliance on the content of this brochure. *Please contact Nicheliving for further details of our all inclusive specifications. ^Offer available on proof and verification of comparable new house and land package. Terms and conditions apply, visit Nicheliving.com.au for full details.



Nicheliving.com.au